



WELCOME

*Pré du Lac*

WELCOME GUIDE

THE WORD OF

# Welcome



Situated 500 meters from the lake and merely 10 kilometers from Annecy, Pré du Lac provides a tranquil environment, away from the city's hustle and bustle.

The splendid park, offering stunning vistas of the mountains encircling the lake, serves as an ideal locale to rejuvenate in a welcoming and amicable atmosphere, perfect for family vacations, romantic getaways, gatherings with friends, or group retreats.

The cycling path encircling Lake Annecy passes directly in front of our establishment.

You will uncover a haven for nature enthusiasts and a diverse array of sports: hiking, cycling, paragliding, sailing, canoeing, paddleboarding... There is something to cater to every preference.

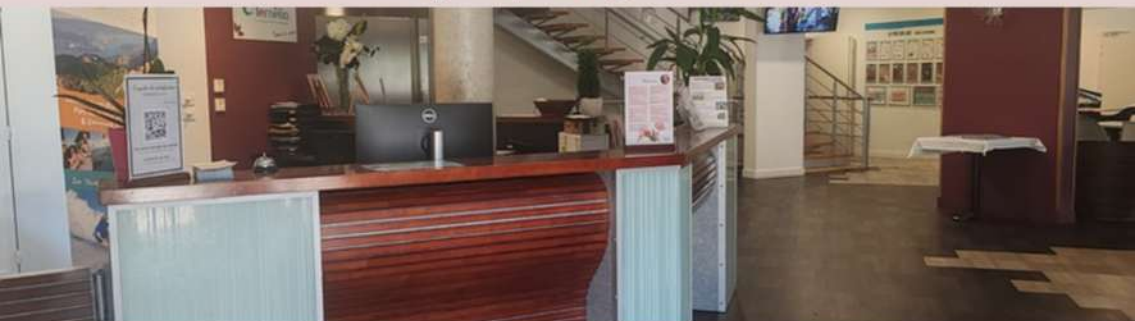
**OPEN THROUGHOUT THE YEAR, PRÉ DU LAC BECKONS YOU  
TO EXPLORE ITS DIVERSE ASPECTS.**

*Aurélie Gasnier, the director, along with the  
entire Pré du lac team, is pleased to welcome  
you to her establishment.*



# The Reception

*a focal point of your visit*



The reception team, the true heart of the establishment, is dedicated to welcoming, informing, and supporting you throughout your stay.

---

## RESERVATION AT THE RECEPTION (WITH SUPPLEMENT)

- Massages
- Wellness pool area
- Bicycle rentals
- Meal reservation, including breakfast, lunch, dinner, and picnics for lunch and/or dinner.

Our team extends a warm welcome to you.

**Daily from 8 a.m. to 8 p.m.**

Join us at 04 50 68 65 26

Our facility offers charging stations for electric vehicles, conveniently located in the parking lot.



## OUR RECEPTION IS ALSO

- A request for a room intervention
- A visitor information center
- Location of athletic equipment

# The Bar

*At the core of our establishment, the bar serves as an ideal venue for gatherings at any hour. Whether for a morning coffee, a refreshing drink following an activity, or an evening aperitif, our team greets you in a warm and inviting atmosphere.*



At the counter, at the table, or even on the terrace, the team will be delighted to welcome you and present the drinks menu along with sharing platter, cocktails, regional beers, warm or fruit beverages.

**This space serves as a venue for interaction and camaraderie.  
This space is dedicated to you, regardless of whether you are a consumer.  
“Personal beverages are not permitted.”**

**The bar serves as the perfect venue for all your events.**





# THE Bar Menu

PRÉ DU LAC

Please be advised that alcohol abuse poses significant risks to your health.  
Consume responsibly. Taxes and service charges included.

## The cocktails

**MOJITO-18cl**..... 7.50€

White Rhum, Perrier, lime, mint and sugar

**MOJITO FRUITE-18cl**..... 7.50€

White Rhum, Pernier, juice, lime, mint and sugar

**TOO SCHUSS-18cl**..... 7.50€

White Rhum, Malibu, orange juice, pineapple juice

**POUDREUSE-18cl**..... 7.50€

Génépi, lime, shweppes tonic

**DOUCEUR PASSION-14cl**..... 7.50€

Vodka, passion fruit juice, vanilla syrup

**GIN TONIC-14cl**..... 6.50€

Gin, Schweppes Tonic, lime

**TEQUILA SUNRISE -18cl**..... 7.50€

Tequila, orange juice, grenadine syrup

**CAIPIRINHA -6cl**

Cachaça, lime, cane sugar ..... 6.50€

**PLANTEUR -18cl**

White Rhum, pineapple juice, mango, ..... 7.50€  
passion fruit, sugar

**MOSCOW MULE -16cl**

Vodka, Ginger beer, lime ..... 7.50€



## Spritz

8.00€

**APEROL SPRITZ- 18CL**

Aperol, sparkling wine, perrier, orange wedge

**SUMMER SPRITZ- 18CL**

Melonade, sparkling wine, perrier, waterlemon  
syrup

**SPRITZ FLEURI- 18CL**

Elderflower liqueur, sparkling wine, perrier  
lemon and mint



## Without alcohol

4.00€

**VIRGIN MOJITO -18cl**

Perrier, lime, mint, sugar

**PINK SUN -18cl**

Guava juice, Lemonade, mojito syrup

**BRASIL-18cl**

Pineapple, lime and mango juice

**L'AZIZA -18cl**

Apple juice, strawberry juice and lime syrup

**BORA BORA -18cl**

Pineapple, mango, passion fruit juice  
and grenadine syrup

**L'ABRI-COTIER -18cl**

Abricot and pineapple juice, perrier, peach syrup



|                                     |   |
|-------------------------------------|---|
| Ricard - 2cl.....                   | 2.50€   |
| Martini, Porto, Suze - 6cl.....     | 3.00€   |
| Kir - 12cl.....                     | 2.50€   |
| Sparkling Kir - 12cl.....           | 3.70€   |
| Glass of sparkling wine - 12cl..... | 3.50€   |
| Wine by glass - 12cl .....          | 3.50€   |
| Apéritif du randonneur - 6cl .....  | 4.00€  |



## Spirits



|   |       |
|---|-------|
| Whisky, Rhum, Captain Morgan - 4cl.....           | 4.50€ |
| Vodka, Malibu - 4cl.....                          | 4.50€ |
| Spiritueux premium- 4cl.....                      | 8.00€ |
| <small>(Aberlour, Citadelle, Diplomatico)</small> |       |
| Supp. soda .....                                  | 0.50€ |

"Arranged from the Alps" Rhum - 4cl ..... 6.50€

"Arranged from the Alps" ..... 15.00€  
Rhum tasting selection- 5x2cl



## Digestives

|                                      |       |
|--------------------------------------|-------|
| Get 27, Get 31 - 4cl.....            | 5.00€ |
| Génépi, Marc de Savoie - 4cl.....    | 5.00€ |
| Baileys, Poire, Calvados - 4cl ..... | 5.00€ |
| Supp. soda.....                      | 0.50€ |



## Wine bottles

|  |        |
|--|--------|
| Champagne - 75cl .....                 | 50.00€ |
| Seyssel traditional Method -75cl ..... | 30.00€ |



## Water

|                          |       |
|--------------------------|-------|
| Cristaline - 1,5L.....   | 2.00€ |
| Cristaline - 0,50cl..... | 1.00€ |

## Sharing platter

|                                      |        |
|--------------------------------------|--------|
| Assorted charcuterie or cheese ..... | 10.00€ |
| Mix .....                            | 14.00€ |

|   |       |
|---|-------|
| Soda - 25cl .....   | 2.50€ |
| <small>Coke, Coke zero, Schweppes tonic or agrumes, lemonade, Ice tea</small> |       |
| Perrier - 25cl.....   | 2.50€ |
| Water syrup - 25cl.....   | 1.50€ |
| Fruit beverage Granini - 25cl .....   | 2.50€ |
| Freshly squeezed lemon .....  | 3.00€ |



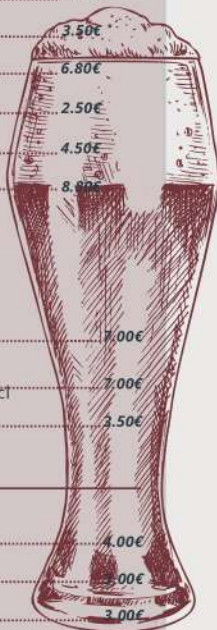
## Beers

### Alpic Draft Beers : Craft

|                           |       |
|---------------------------|-------|
| Blonde Galopin -15cl..... | 2.00€ |
| Blonde Demi -25cl.....    | 3.50€ |
| Blonde Pinte -50cl.....   | 6.80€ |
| Ambree Galopin -15cl..... | 2.50€ |
| Ambree Demi -25cl.....    | 4.50€ |
| Ambree Pinte -50cl.....   | 8.00€ |

### Bières bouteille :

|                                 |       |
|---------------------------------|-------|
| Craft Savoie beer -33cl         |       |
| blanche .....                   | 7.00€ |
| Desperados -33cl .....          | 7.00€ |
| Non-alcoholic beers -33cl ..... | 3.50€ |
| <hr/>                           |       |
| Picon Beer -25cl .....          | 4.00€ |
| Monaco -25cl.....               | 3.00€ |
| Panaché -25cl.....              | 3.00€ |
| Supp syrup.....                 | 0.30€ |



## Hot beverages

|                             |       |
|-----------------------------|-------|
| Coffe/Decaffeinated.....    | 1.50€ |
| Tea / herbal infusion ..... | 2.50€ |
| Hot chocolat .....          | 2.50€ |
| Coffee with milk .....      | 2.00€ |
| Coffee cream .....          | 1.60€ |
| Frappé & Latte .....        | 3.00€ |

Flavors of your preference are available: please refer to the slate on the counter.

# Your hotel Room



**Two comfort ranges for enhanced selection.**

*The Pre du lac provides:*

- **Eco double and family rooms** situated in the Savoyard building of Parmelan.
- **Premium double or connecting rooms** (renovated in winter 2025) situated on the ground floor of our wooded park.

For your convenience, double beds can be requested in premium rooms, along with baby cots and hairdryers, which are also available upon request at the reception.

**Check-in opens at 5 p.m., and check-out is required by 10 a.m.**



A **late check-out or early check-in** is available for an additional fee, subject to availability; please inquire at the reception for further details.

Wi-Fi is accessible in our premium rooms and communal areas.



# The Dining room

*Buffet formula catering to diverse preferences.*

In a welcoming and casual environment, our restaurant provides an all-you-can-eat buffet meal that caters to diverse appetites and is perfect for the entire family.

On the menu:

- Breakfast: "Commence the day with an assortment of pastries, cereals, yogurts, and a variety of fresh breads... as well as eggs prepared in numerous styles, grilled bacon, and pancakes.
- Lunch and Dinner: At each meal, you have the option to serve yourself from an array of meticulously prepared dishes.
- Possibility for Savoyard fondues.



**A wine list** can be obtained upon request from the dining room staff (additional charge applies).



To facilitate your enjoyment of day trips, **picnics can be reserved the day before at our reception.**

## Opening hours:

7:30 am - 10:00 a.m.

12 pm - 13:30 pm

7:00 pm - 8:30 pm

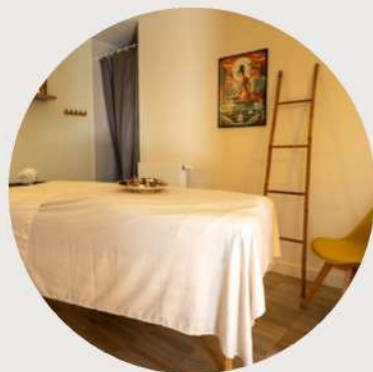




# Wellness facility

## PRACTICAL INFORMATION

- In this area, you will discover a sauna, a hammam, a swimming pool featuring whirlpool baths and a massage water fountain.
- The facility operates daily from 10 a.m. to 8 p.m., with the option for extended hours until 10 p.m. (reservation required at the reception).
- Admission is 6€ without a towel and 8€ with a towel included.
- Admission is complimentary for children under the age of 3.
- Family slots are available.



## MASSAGES

Take the opportunity to unwind during your visit! Justine, our certified practitioner, provides wellness massages customized to your specific needs.

At times, we require a soothing, indulgent, and rejuvenating experience, while at other moments, a therapeutic or deep tissue massage is beneficial for recovery or preparation for athletic endeavors. There is certainly a treatment that is perfectly suited to your needs!

# Massages

## JAPANESE FACIAL MASSAGE

40 min - 39€

Are you looking to rejuvenate your facial features, regenerate tissues, and enhance your skin's radiance?

This massage is ideal for you; through a combination of modeling techniques and pressure points on the meridians, it will provide a moment of genuine relaxation.

## THAI PLANTAR REFLEXOLOGY

45 min - 43€

This foot massage primarily targets the alleviation of tension and the enhancement of relaxation. It integrates elements of body massage and pressure techniques.

Cool or Thai, the choice is yours!

## MESSAGE FOR CHILDREN / ADO

20 min - 18€

Introduce your child to the enjoyment of a wellness massage (parent required).

## WELLNESS MESSAGE THERAPY

45 min - 45€

For a tranquil body and mind, this massage will provide you with a moment of complete well-being. (light or deeper pressure)

## INCLUSIVE MESSAGE THERAPY

20 min - 19€



This massage is tailored for individuals with disabilities and wheelchair users.

A moment of relaxation and rejuvenation, tailored specifically for you.

It is a non-therapeutic massage aimed at providing comfort to alleviate daily tension.

## MESSAGE FOR EXPECTANT MOTHERS

40 min - 39€

This message is intended for expectant mothers (from the fourth month of pregnancy).

You will receive a massage utilizing Ayurvedic techniques that are both soothing and immersive.

## FULLNESS MESSAGE THERAPY

1h15 min - 75€

Indulge in a moment of abundance and well-being. You are on the verge of experiencing a genuine sensory journey. Proceed with caution; ready yourself for a moment of complete relaxation.

## TRADITIONAL THAI MESSAGE

45 min - 45€

An age-old technique that integrates pressure and revitalizing stretches, Thai massage liberates both the body and mind from tension. It is conducted without the use of oil and while fully clothed. (If you seek a relaxing massage, Thai massage may be excessively vigorous.)

## MESSAGE FOR TWO

45 min - 90€ / 75 min - 150€

The most rewarding experience is one that can be shared.

## TARGETED MESSAGE FOR THE BACK OR LEGS

20 min - 19€

After a hike or a bike ride, consider a leg massage. Or a back massage to alleviate the tension of daily life.



# Recreational amenities



Experience our semi-Olympic outdoor swimming pool with complimentary access, perfect for refreshing and unwinding during the summer months

- Deckchairs are available
- Unmonitored swimming pool
- Access restricted to establishment patrons

Additionally, make use of our complimentary leisure facilities :

- City stadium : perfect for football and basketball
- Tennis facility
- Two petanque courts
- Table Tennis
- Beach Volleyball
- Childrens playground





## *Children's Clubs and Entertainment*

### **Kids' Clubs - Holidays brimming with adventure!**

During the summer, the children's club, open to children aged 3 to 17, provides enjoyable, athletic, and creative activities daily, overseen by qualified instructors.

*A destination where your children can engage in enjoyable activities and forge new friendships, allowing you to fully relish your experience!*

#### **Regarding the program:**

- Manual workshops
- Major competitions
- MiniDisc
- Natural discoveries
- Foam party...

#### **Operating hours:**

Monday through Friday, both morning and afternoon

Registration for children and teenagers will take place on Sunday at 6:30 p.m. during the welcome drink or with our animators. Evening with the children during the rural twilight.



The activity programme for children and adolescents is accessible on the activities panel.

# The Animation



*Many activities are proposed in the summer for everyone to enjoy together.*

*Welcome drinks on the bar terrace at 6:30 p.m. on Sundays. (during the summer)*

*Country evening on Monday evening (barbecue with music), the day may vary depending on the weather.*

*Wednesday family day with an introduction to laser biathlon in the morning, barbecue at the Saint-Jorioz nautical base and activities on the lake (paddle board, canoing, sailing).*



*Quiz night, karaoke, concerts...*



*Every week during the summer period, we offer hiking trips with mountain guides (no extra charge - register at reception)*

# Activities

*We suggest you discover other activities nearby such as:*

Water activities,  
Hiking  
Biking,  
Paragliding,  
Climbing,  
Via ferrata,  
Golf,  
Adventure course  
And many more...



*For more  
information, please  
go to the reception  
:)*

# Information



## USEFUL NUMBERS:

Annecy Hospital: 04 50 63 63 63

Emergency: 112

Saint-Jorioz Town Hall: 04 50 68 60 44

Saint-Jorioz Nursing Practice: 06 81 01 33 67

Saint-Jorioz Medical Practice: 04 50 68 61 70

Saint-Jorioz Veterinarian: 04 50 52 63 98

## ACCESS:

- For those who prefer to drive, car access is possible via the A41 and A410 motorways, easily connecting the location to major cities such as Lyon and Geneva.
- Bus travelers can use local services that serve the area with stops nearby.
- The train is also a convenient option, with Annecy station offering frequent connections to Paris and other major French cities.
- For international visitors, Geneva Airport is the closest, about an hour's drive away, offering flights from many destinations.
- Finally, for cycling enthusiasts, the region offers beautiful cycle paths, perfect for discovering the picturesque landscape around the lake.

*The Ternélia Le Pré du Lac hotel establishment is part of the Ternelia Littoral et Montagnes association brand which offers stays at the following sites:*



**THE RABUONS**  
Mercantour  
National Park



**LES FLOCONS VERTS**  
Grand Massif Portes  
du Mont Blanc



**TELEMARK**  
Vanoise  
National Park



**LE PRÉ DU LAC**  
Lake Annecy



**L'EAU VIVE**  
Bauges La Féclaz  
Geopark



**L'ÎLE DU CHÉРАН**  
Lescheraines



**THE RESIDENCES OF  
ARMOR**  
Finistère



**LE VENT DU LARGE**  
Saint-Gilles-Croix-de-Vie



**HENRY IV**  
Clisson Vineyards of  
Nantes

**The Pré du Lac hotel establishment is a member of the Ternélia Tourisme federation** which brings together 60 independent associations like ours, thus offering a choice of destinations throughout France.

information available on our website [www.ternelia-lm.com](http://www.ternelia-lm.com)

# Our Values & Commitments

*A committed and supportive establishment.*

Our hotel establishment has the particularity of welcoming people on professional integration paths into its team.

This system allows all profiles to learn, find employment dynamics, and actively contribute to the life of the establishment.

A human wealth that is an integral part of our identity and our values:  
**Welcome, inclusion, and transmission.**

Le Pré du Lac has been awarded the Green Key label and is dedicated to a high-performance environmental strategy, striving to continuously advance towards the best practices endorsed by the Green Key label.



**Environmental education**



**Energy management: electricity, water:**

100% low-energy bulb 50% clean energy



**Waste reduction  
Reduce and limit  
individual packaging**



**Animation of a humanist  
association project**

Every year in France, millions of vacationers and business travelers stay in tourist accommodations and go to restaurants. Today, they can choose to reduce their environmental impact and assert their social responsibility by choosing one of the 624 certified establishments.



## *Share your experience*

### **DID YOU ENJOY YOUR STAY WITH US?**

We're delighted to have welcomed you to our establishment. Please feel free to share your experience with others by writing a review on our website, on Google, or on TripAdvisor.fr. Thank you in advance for your feedback. See you soon!

 [Ternelia the lake father](#)

 [@lepredulac](#)  
[@ternelia](#)

 [LePreduLacTernelia](#)